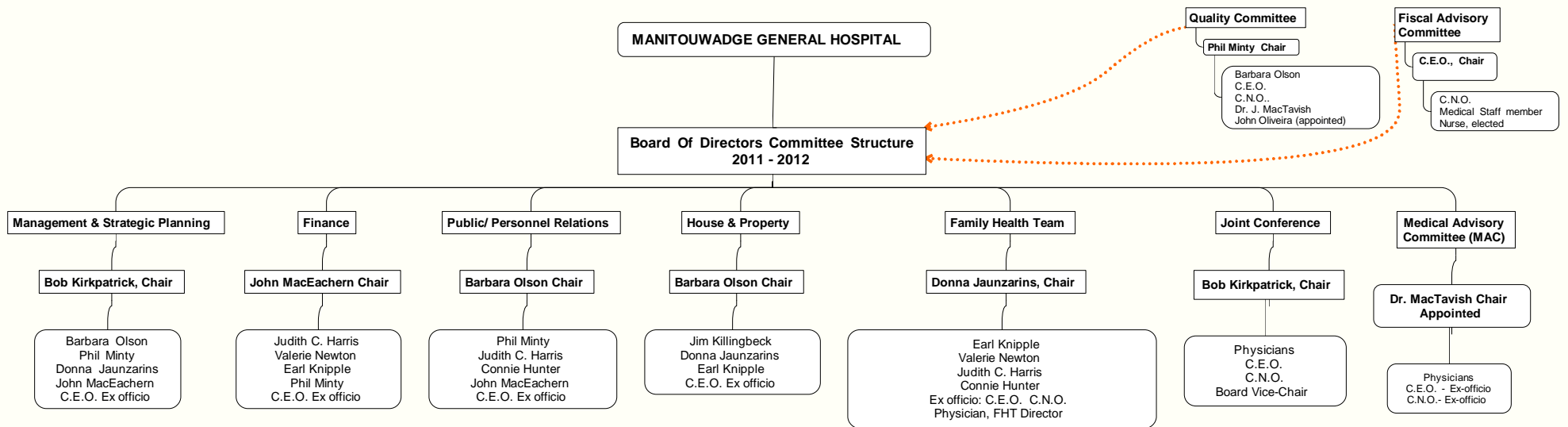


2011-2012 Board Structure



Chair: Bob Kirkpatrick
Vice-Chair: Barbara Olson
Finance Chair: John MacEachern
Secretary/Treasurer: Jocelyn Bourgoin

Ex Officio
 CEO: Jocelyn Bourgoin
 COS: Dr. Jim MacTavish
 CNO: Debbie Hardy

TERMS OF OFFICE (voting directors)

3 Years (2014)
 Phil Minty
 Barbara Olson
 Judith C. Harris

2 Years (2013)
 Earl Knipple
 Connie Hunter
 Donna Jaunzarins

1 Year (2012)
 John MacEachern
 Jim Killingbeck
 Valerie Newton

Life Director:
 Robert Kirkpatrick
 (appointed 1993)

ABECEDARIANS

Raymond Lelièvre

The Board Chair and Vice Chair are Ex-officio members of all committees.